

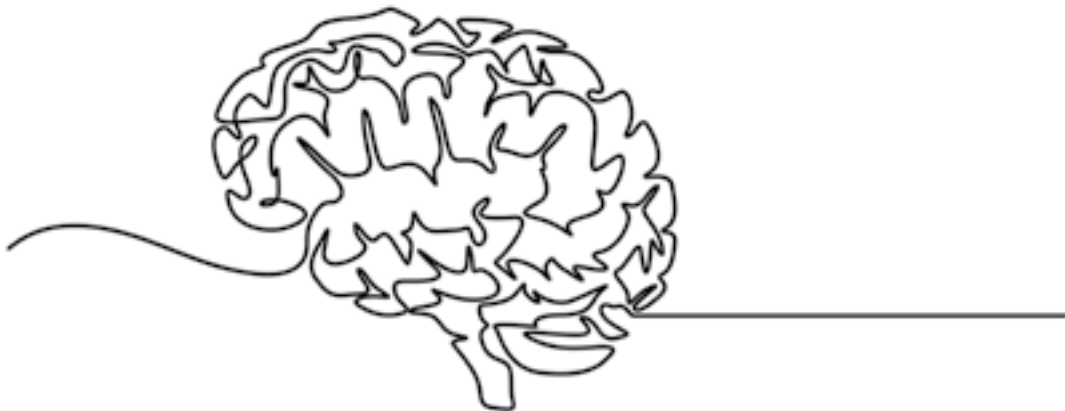


THE WARREN ALPERT
Medical School
BROWN UNIVERSITY



Comprehensive Stroke Center
Rhode Island Hospital

BROWNHealth
UNIVERSITY



Rhode Island Stroke Symposium

September, 26th 2025

A HYBRID EVENT

Providence Marriott Downtown

and Livestreamed

PLEASE VISIT THE REGISTRATION WEBSITE FOR MORE INFORMATION

<https://cme-learning.brown.edu/2025-RI-Stroke>

SYMPOSIUM OVERVIEW

Now in its fifth year, the Rhode Island Stroke Symposium seeks to integrate the most advanced research and medical knowledge in the treatment of stroke and provide a forum for dissemination of that knowledge. The purpose of the program is to provide an up-date on state-of-the-art evaluation and management of acute stroke as practiced at a Comprehensive Stroke Center.

The Comprehensive Stroke Center at Rhode Island Hospital is the oldest in New England and a high-volume academic medical center that provides cutting-edge care for patients with acute ischemic stroke, intracerebral hemorrhage, and subarachnoid hemorrhage. In this program, participants will be exposed to a variety of disciplines, including stroke neurology, neurocritical care, neurosurgery, neuro-interventional radiology, emergency medicine, stroke nursing, advanced practice care, and neurorehabilitation. The goal of the activity is to enhance the care of the stroke patient in Rhode Island and the wider New England region.

TARGET AUDIENCE

Regional primary care and specialist physicians, including emergency physicians, neurologists, cardiologists, radiologists, surgeons, nurse practitioners, registered nurses, paramedics, pharmacists, physical therapists, occupational therapists, speech therapists, social workers, advanced practice professionals, residents, fellows, medical students and other allied members of the healthcare team.

LEARNING OBJECTIVES

At the conclusion of the symposium, participants should be better able to:

- 1. Outline advances in the field detection of large vessel occlusion stroke
- 2. Describe best practices in airway management of the acute stroke patient
- 3. Identify key pillars of emergency management of intracerebral hemorrhage (ICH)
- 4. Summarize key aspects in evaluation and management of central retinal artery occlusion (CRAO)
- 5. Explain most recent updates in endovascular stroke therapy
- 6. Review treatment options for intraluminal thrombi in acute stroke
- 7. Compare medical with endovascular treatment options for medium vessel occlusions (MeVo)
- 8. Discuss approaches to evaluation and management of carotid webs
- 9. Apply a new classification system for stroke
- 10. Study the role of factor XI inhibition in stroke prevention
- 11. Delineate antithrombotic reversal pathways in intracranial hemorrhage
- 12. Explore treatment options for cavernous malformations
- 13. Evaluate the role of middle meningeal artery (MMA) embolization for subdural hemorrhage
- 14. Select stroke patients to benefit from vestibular therapy
- 15. Recognize mood disorders after stroke and their potential effects on outcomes
- 16. Provide an update on the role of palliative care in stroke

ACCREDITATION INFORMATION

Physicians

This activity has been planned and implemented in accordance with the accreditation requirements and policies of the Accreditation Council for Continuing Medical Education (ACCME) through the joint providership of the Warren Alpert Medical School of Brown University and the Comprehensive Stroke Center at Rhode Island Hospital in collaboration with the Department of Neurology and Neurovascular Center. The Warren Alpert Medical School of Brown University is accredited by the ACCME to provide continuing medical education.

The Warren Alpert Medical School designates this live activity for a maximum of 6.50 *AMA PRA Category 1 Credits™*. Physicians should claim only the credit commensurate with the extent of their participation in the activity.

Nursing CONTInuing Professional Development

This nursing continuing professional development activity was approved by the Center for Professional Practice and Innovation, an accredited approver by the American Nurses Credentialing Center’s Commission on Accreditation.

Applications for additional credit types are currently in process. Check registration website for updates.

REGISTRATION FEES

Physicians	\$125.00
Nurses, EMS & Allied Team	\$50.00
Residents, Fellows & Med Students	FREE

Registration includes up to 6.50 hours of CME or CE credit and either the convenience of virtual participation, or parking, meals, a syllabus and networking opportunity. Both participation types include access to a copy of slides as well as a recording of the day, available for viewing through the end of December.

Limited seating is available for in-person participation so register today to secure your spot! If registration is full, you may add yourself to the waitlist for the in-person event, or register for the virtual live stream via Zoom.

A select number of complimentary seats are available on a first-come, first-served basis to Brown University Fellows, Residents, and Students. Please email cme@brown.edu with RI Stroke Symposium in the subject line for instructions. Once that capacity is reached, Fellows, Residents, and Students affiliated with Brown University and beyond are welcome to a complimentary registration for the virtual live stream of the event via Zoom.

ADA

Please notify the Brown CME Office in writing at least 72 hours prior to the conference to request reasonable accommodations.

Cancellation Policy

Cancellations must be made in writing to the Brown CME Office at least two weeks prior to the conference, no later than 5 PM ET on September 12, 2025. A \$35.00 administrative fee will be charged for all refunds (no refunds for “no shows”). There will be no additional charge for substitutions. This conference is subject to change or cancellation. Brown CME reserves the right to change the delivery format, delay, or cancel a course due to any unforeseen circumstances. In the event that the program is canceled, your registration fee will be refunded.

For More Information, Contact Brown Continuing Medical Education | E: CME@Brown.edu

Friday, September 26th, 2025

8:00 - 8:05 am	Welcome <i>Christoph Stretz, MD, FAAN, FANA & Shadi Yaghi, MD, FAHA</i>
8:05 - 9:15 am	<u>TOPIC BLOCK 1</u> <i>Pre-hospital and ED Evaluation and Management of Acute Stroke</i> New Tools for Field Detection of Large Vessel Occlusion Stroke <i>Liqi Shu, MD</i> Airway Management of the Acute Stroke Patient <i>Torrey Boland Birch, MD</i> Emergency Management of ICH <i>Samuel Goldman, MD, MPH</i> Discussion <i>All</i>
9:15 - 10:25 am	<u>TOPIC BLOCK 2</u> <i>Acute Stroke</i> Time is Vision – Emergent Evaluation & Management of CRAO <i>Tatiana Bakaeva, MD, PhD</i> Updates in Endovascular Therapy <i>Mahesh Jayaraman, MD, FACR</i> Navigating Intraluminal Thrombi in Acute Stroke <i>Hannah Irvine Russell, MD</i> Discussion <i>All</i>
10:25 - 10:55 am	<u>MORNING BREAK</u>
10:55 - 11:25 am	Debate: To Intervene or Not – Endovascular Therapy for Medium Vessel Occlusions (MeVo) <i>Maksim Shapiro, MD & Fawaz Al-Mufti, MD</i>
11:25-12:35 am	<u>TOPIC BLOCK 3</u> <i>Secondary Stroke Prevention</i> Caught in the (Carotid) Web <i>Farhan Khan, MD, MS</i> A New Classification System for Stroke <i>Shadi Yaghi, MD, FAHA</i> Factor XI Inhibition in Stroke Prevention <i>Jeffrey Weitz, , OC, MD, FRCP(C), FRSC, FACP</i> Discussion <i>All</i>

12:35-1:45 pm	LUNCH BREAK
1:45-2:55 pm	<u>TOPIC BLOCK 4</u> <i>Intracranial Hemorrhage & Vascular Malformations</i> Antithrombotic Reversal in Intracranial Hemorrhage <i>Michelle Payne, PharmD, BCCCP</i> Management Options for Cavernous Malformations <i>Curtis Doberstein, MD</i> MMA – A Promising Intervention for Subdural Hemorrhage <i>Krisztina Moldovan, MD</i> Discussion <i>All</i>
2:55-4:05 pm	<u>TOPIC BLOCK 5</u> <i>Stroke Recovery and Stroke Rehab</i> Vestibular Rehab Therapy for Stroke <i>Lauren Hall, MD</i> Mood Disorders After Stroke and Their Impact on Outcome <i>Colin Harrington, MD</i> Palliative Care in Stroke <i>Sara Rose Lamport, BA, BSN, MSN</i> Discussion <i>All</i>
4:05-4:10 pm	Closing Remarks by Symposium Co-Chairs <i>Christoph Stretz, MD, FAAN, FANA & Shadi Yaghi, MD, FAHA</i>

CO-CHAIRS

Christoph Stretz, MD, FAAN, FANA
Associate Professor of Neurology & Neurosurgery
The Warren Alpert Medical School of Brown University
Director, Vascular Neurology Fellowship Program
Neurologist, Divisions of Vascular Neurology & Neurocritical Care
Comprehensive Stroke Center at Rhode Island Hospital
Providence, RI



Shadi Yaghi, MD, FAHA
Professor of Neurology
The Warren Alpert Medical School of Brown University
Vice Chair for Clinical Research, Department of Neurology
Co-Director, Comprehensive Stroke Center at Rhode Island Hospital
Director, Vascular Neurology, Brown University Health
Division Chief, Vascular Neurology, Brown Neurology
Providence, RI



PLANNING COMMITTEE

Nakeesha Brown
Stroke Program Secretary
Comprehensive Stroke Center at Rhode Island Hospital
Providence, RI

Melissa M. Harmon, MSN, RN, ASC-BC
Manager
Comprehensive Stroke Center at Rhode Island Hospital
Providence, RI

John Potvin, BS, NRP, CEMSO
Chief of Department
Hopkins Hill Fire District
Director of Fire/Rescue Communications
Town of Coventry
Coventry, Rhode Island

Stephanie Souza, MSN, RN, ASC-BC
Assistant Clinical Manager
Comprehensive Stroke Center at Rhode Island Hospital
Providence, RI

Christoph Stretz, MD, FAAN, FANA
Associate Professor of Neurology & Neurosurgery
The Warren Alpert Medical School of Brown University
Director, Vascular Neurology Fellowship Program
Neurologist, Divisions of Vascular Neurology & Neuro-critical Care
Comprehensive Stroke Center at Rhode Island Hospital
Providence, RI

Shadi Yaghi, MD, FAHA
Professor of Neurology
The Warren Alpert Medical School of Brown University
Vice-Chair for Clinical Research, Department of Neurology
Co-Director, Comprehensive Stroke Center at Rhode Island Hospital
Director, Vascular Neurology, Brown University Health
Division Chief, Vascular Neurology, Brown Neurology
Providence, RI

Office of CME
The Warren Alpert Medical School of Brown University
Jennifer Maloney, Interim Director
Emmy Nuttall, Program Manager
Michelle King, CME Coordinator

SPEAKERS

Fawaz Al-Mufti, MD
Associate Dean for Research & Innovation
Vice-Chair of Neurology (Research)
Associate Professor of Neurology, Neurosurgery & Radiology
New York Medical College
Director of the Center for Neuroscience Research and Innovation
Director of the CNC Neuroendovascular Surgery Fellowship
Director of the Neurocritical Care Unit
Westchester Medical Center
Valhalla, NY

Tatiana Bakaeva, MD, PhD
Assistant Professor of Surgery
Assistant Professor of Neurology
The Warren Alpert Medical School at Brown University
Service Chief, Neuro-Ophthalmology
Brown University Health Ophthalmology
Providence, RI

Torrey Boland Birch, MD
Associate Professor of Neurology and Neurosurgery, Clinician Educator
The Warren Alpert Medical School of Brown University
Director, Division of Neurocritical Care
Director, Neurocritical Care Unit
Rhode Island Hospital
Providence, RI

Curtis Doberstein, MD
Professor of Neurosurgery, Clinician Educator
The Warren Alpert Medical School of Brown University
Executive Vice-Chair, Clinical Operations
Director, Cerebrovascular and Skull-base Surgery Division
Director, Neurosurgery Residency Training Program
Brown University Health
Providence, RI

Samuel Goldman, MD, MPH
Assistant Professor of Emergency Medicine, Clinician Educator
The Warren Alpert Medical School of Brown University
Attending Physician, Brown Emergency Medicine
Rhode Island Hospital
Providence, RI

Lauren Hall, MD
Assistant Professor of Neurology, Clinician Educator
The Warren Alpert Medical School of Brown University
Physiatrist, Spinal Cord Injury Medicine
Vestibular Rehab Therapy for Stroke
Brown University Health
Providence, RI

Colin Harrington, MD
Professor of Psychiatry and Human Behavior, Clinician Educator
Professor of Medical Science, Clinician Educator
Professor of Medicine, Clinician Educator
The Warren Alpert Medical School of Brown University
Director, CNS-Psychiatry Clerkship and Consultation Psychiatry Fellowship
Director, Consultation Liaison Psychiatry
Brown University Health
Providence, RI

Hannah Irvine Russell, MD
Assistant Professor of Neurology
The Warren Alpert Medical School of Brown University
Vascular Neurologist
Comprehensive Stroke Center at Rhode Island Hospital
Providence, RI

Maresh Jayaraman, MD, FACP
Charles and Elfriede Collis-Frances Weeden Gibson
Professor of Diagnostic Imaging
Chair of Diagnostic Imaging
Professor of Neurology & Neurosurgery
The Warren Alpert Medical School of Brown University
Chief of Diagnostic Imaging
Brown University Health
Director, Neurovascular Center
Rhode Island Hospital
Providence, RI

Farhan Khan, MD, MS
Assistant Professor of Neurology
The Warren Alpert Medical School of Brown University
Vascular Neurologist
Comprehensive Stroke Center at Rhode Island Hospital
Providence, RI

Sarah Rose M. Lamport, BA, BSN, MSN
Teaching Associate of Medicine
The Warren Alpert Medical School of Brown University
Brown Physicians Inc.
Providence, RI

Krisztina Moldovan, MD
Assistant Professor of Neurosurgery
The Warren Alpert Medical School of Brown University
Co-Director of Endovascular Neurosurgery Program
Co-Director of Cerebrovascular Surgery and Endovascular Neurosurgery Outcomes Laboratory
Brown University Health
Providence, RI

Michelle Payne, PharmD, BCCCP
Clinical Pharmacist Specialist
Neurocritical Care
Department of Pharmacy
Rhode Island Hospital
Brown University Health
Providence, RI

Maksim Shapiro, MD
Professor of Radiology, Neurology & Neurosurgery
NYU Grossman School of Medicine
Bernard and Irene Schwartz Interventional Neuroradiology Section
Fellowship Director, Neurointerventional Radiology
NYU Langone Health
NYC Health & Hospitals/Bellevue
New York, NY

Liqi Shu, MD
Instructor in Neurology (Research)
The Warren Alpert Medical School of Brown University
Fellow, Endovascular/ Intervental Neurology
University of Pittsburgh Medical Center
Pittsburgh, PA

Jeffrey Weitz, OC, MD, FRCP(C), FRSC, FACP
Professor of Medicine & Biochemistry and Biomedical Sciences
Executive Director
Thrombosis and Atherosclerosis Research Institute
McMaster University
Ontario, Canada