

**Address:**

Stephen Robert '62 Campus Center / Faunce House  
75 Waterman Street  
Providence, RI 02912

The main room for the Bootcamp is the **Petteruti Lounge**, on the second floor (room number: **201**). Please plan on meeting here on Wednesday (and every!) morning. Breakout rooms are Conference Room 225 and Faunce Memorial (229). Bootcamp leaders can guide you to breakout rooms from this space when needed.

**Parking:**

Please see [here](#) (also linked on the Bootcamp's [website](#)) for information on Brown parking.

**Entering and Navigating the building:**

Enter the building from Waterman Street; there are three doors to the right (facing the building from Waterman) of the arch -

A. If you're able to navigate using stairs, I recommend using the rightmost door (with a bike rack to the left of the door). This door is marked "Stephen Robert '62 Campus Center." See the red circle below. You should be able to follow the signs to Petteruti Lounge, Room 201; if you'd like further instructions, see below under A.cont.

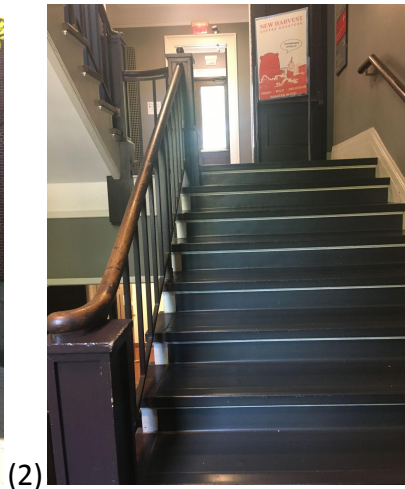
B. If you use elevators, enter using the door under the arch. See the yellow arrow below. Further instructions for elevator-users below under B.cont.

Please reach out if you run into any difficulties finding us!



A.cont. Stair users:

Once you go through the door circled in red (also in pic 1), **go up the half-flight of stairs** immediately in front of you (pic 2), and then **continue up the additional flight to the second floor**. Once you reach floor 2, you'll see a painting and window (pic 3) in front of you. Leave the stairway, and **turn immediately right** (pic 4) - you've arrived at the Petteruti Lounge!



B.cont. Elevator Users:

First, we apologize for the complexity of this navigation!

Navigate to the arch (yellow arrow, pic 1) and go **through the glass door** to your immediate right (pic 2). Once you go through the glass door, **navigate to the silver elevator** in front of you/slightly to the right (pic 3). You'll be on the Ground floor; take this elevator **to Floor 1**. Once you're on the first floor (you'll leave the elevator from the doors opposite from those you entered), go straight and slightly to the left, **curving around the information desk**. Just beyond the desk, find the **white elevator (pic 4)** and **take it to Floor 2**. When you get off on the second floor, take an **immediate right and go straight**: follow the hallway, through the large open area (Leung Hall), and into the double glass doors at the end (pic 5), which is Petteruti Lounge!

(1)



(2)



(3)



(4)



(5)

